

PIAS3 Antibody (C-Terminus)
Rabbit Polyclonal Antibody
Catalog # ALS13825**Specification**

PIAS3 Antibody (C-Terminus) - Product Information

Application	WB, IHC-P, E
Primary Accession	Q9Y6X2
Reactivity	Human, Mouse, Rat
Host	Rabbit
Clonality	Polyclonal
Calculated MW	68kDa KDa
Dilution	WB~~1:1000 IHC-P~~N/A E~~N/A

PIAS3 Antibody (C-Terminus) - Additional Information**Gene ID** 10401**Other Names**

E3 SUMO-protein ligase PIAS3, 6.3.2.-, Protein inhibitor of activated STAT protein 3, PIAS3

Target/Specificity

Human PIAS3

Reconstitution & Storage

Short term 4°C, long term aliquot and store at -20°C, avoid freeze thaw cycles. Store undiluted.

Precautions

PIAS3 Antibody (C-Terminus) is for research use only and not for use in diagnostic or therapeutic procedures.

PIAS3 Antibody (C-Terminus) - Protein Information**Name** PIAS3**Function**

Functions as an E3-type small ubiquitin-like modifier (SUMO) ligase, stabilizing the interaction between UBE2I and the substrate, and as a SUMO-tethering factor. Plays a crucial role as a transcriptional coregulation in various cellular pathways, including the STAT pathway and the steroid hormone signaling pathway. Involved in regulating STAT3 signaling via inhibiting STAT3 DNA-binding and suppressing cell growth. Enhances the sumoylation of MTA1 and may participate in its paralog-selective sumoylation (PubMed:21965678, PubMed:9388184). Sumoylates CCAR2 which promotes its interaction with SIRT1 (PubMed:25406032). Diminishes the sumoylation of ZFH3 by preventing the colocalization of ZFH3 with SUMO1 in the

nucleus (PubMed:24651376).

Cellular Location

Cytoplasm {ECO:0000250|UniProtKB:O54714}. Nucleus {ECO:0000250|UniProtKB:O54714}. Nucleus speckle {ECO:0000250|UniProtKB:O54714}. Note=Colocalizes with MITF in the nucleus. Colocalizes with GFI1 in nuclear dots. Colocalizes with SUMO1 in nuclear granules. {ECO:0000250|UniProtKB:O54714}

Tissue Location

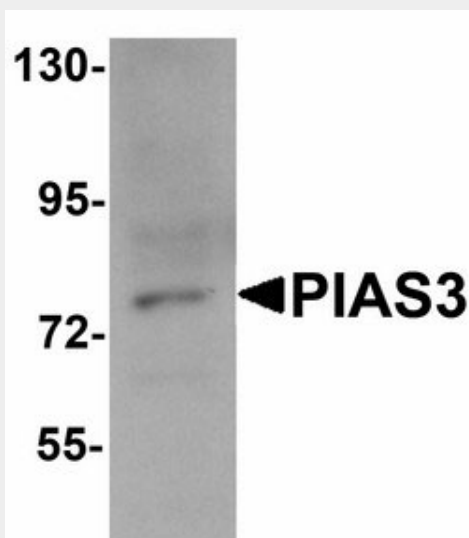
Widely expressed..

PIAS3 Antibody (C-Terminus) - Protocols

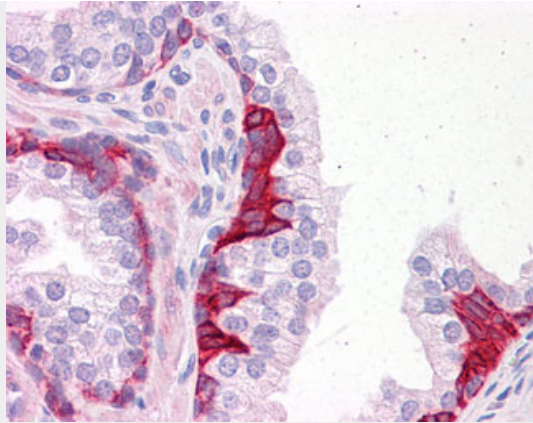
Provided below are standard protocols that you may find useful for product applications.

- [Western Blot](#)
- [Blocking Peptides](#)
- [Dot Blot](#)
- [Immunohistochemistry](#)
- [Immunofluorescence](#)
- [Immunoprecipitation](#)
- [Flow Cytometry](#)
- [Cell Culture](#)

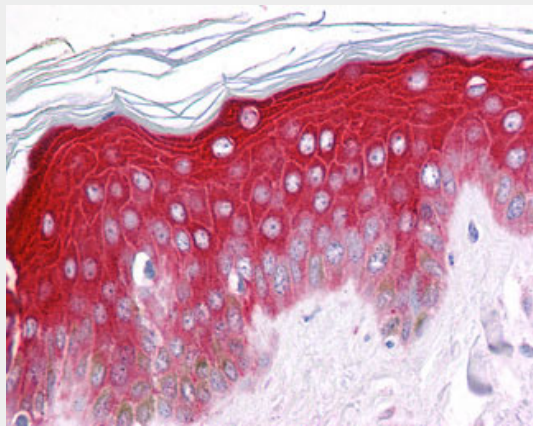
PIAS3 Antibody (C-Terminus) - Images



Western blot of PIAS3 in K562 cell lysate with PIAS3 antibody at 1 ug/ml.



Anti-PIAS3 antibody IHC of human prostate.



Anti-PIAS3 antibody IHC of human skin.

PIAS3 Antibody (C-Terminus) - Background

Functions as an E3-type small ubiquitin-like modifier (SUMO) ligase, stabilizing the interaction between UBE2I and the substrate, and as a SUMO-tethering factor. Plays a crucial role as a transcriptional coregulation in various cellular pathways, including the STAT pathway and the steroid hormone signaling pathway. Involved in regulating STAT3 signaling via inhibiting STAT3 DNA-binding and suppressing cell growth. Enhances the sumoylation of MTA1 and may participate in its paralog-selective sumoylation.

PIAS3 Antibody (C-Terminus) - References

Ueki N.,et al.J. Hum. Genet. 44:193-196(1999).
Bechtel S.,et al.BMC Genomics 8:399-399(2007).
Chung C.D.,et al.Science 278:1803-1805(1997).
Junicho A.,et al.Biochem. Biophys. Res. Commun. 278:9-13(2000).
Roedel B.,et al.EMBO J. 19:5845-5855(2000).